

HOLISTIC ASSET MANAGEMENT

# CAPABILITY STATEMENT

RECOGNISE, BELIEVE AND SEE THE REAL  
VALUE OF MANAGING ASSETS.



(07) 5211 0322  
[info@holisticam.com.au](mailto:info@holisticam.com.au)  
[www.holisticam.com.au](http://www.holisticam.com.au)



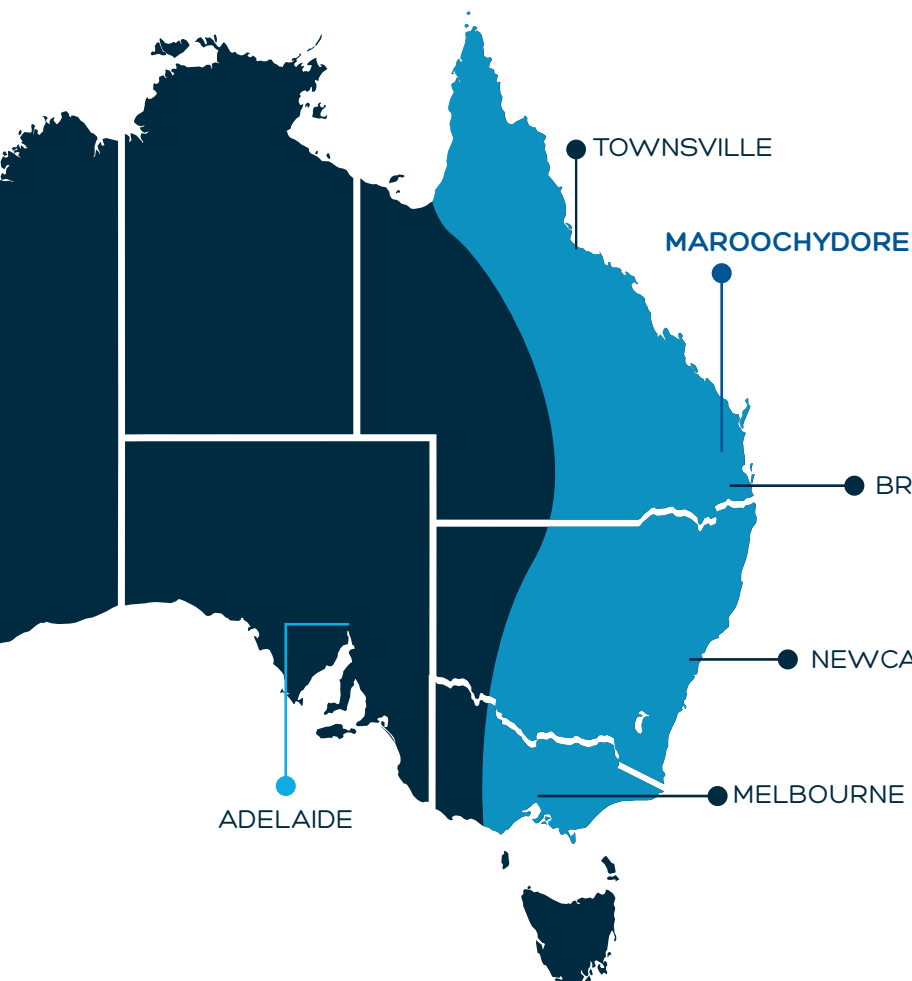
# COMPANY OVERVIEW

## HOLISTIC ASSET MANAGEMENT

Holistic Asset Management is a leading provider of advanced reliability engineering technology and services to asset-intensive industries. Our mission is to help organisations optimise asset performance, reduce operational risks, and achieve long-term sustainability through data-driven decision-making and innovative solutions.

We are proud of our reputation as a reliable and advanced engineering services provider, especially within the mining sector.

Our commitment to our customers is to provide the most reliable and advanced engineering solutions that will help them improve their reliability management systems, assets and ultimately reduce their operational costs.



## LOCATION

Holistic Asset Management began operations in 2017, originally based in Melbourne, and has since grown organically. Our headquarters is now located in **South East Queensland** (Maroochydore), with additional engineers in **Brisbane, Townsville, Newcastle, Melbourne and Adelaide.**

# Values

Inclusive

Quality

Growth

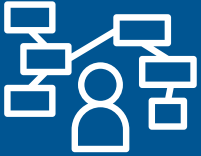
Purposeful

Empowered

# Industries we serve



# Services



## Reliability Engineering & Asset Management

We are a leading provider of asset management and advanced reliability services, capable of tailoring solutions to meet your specific asset, process, and operational objectives, over the asset lifecycle. Our services allow us to develop or optimise your asset performance, reduce your risk exposure and the cost of maintenance.

These services include:

- Asset Management Maturity Assessments
- Operational or Maintenance Readiness
- Asset Criticality Assessments
- Spares Management
- Master Data Management
- Maintenance Strategy Development using:
  - Reliability Centred Maintenance (RCM)
  - Failure Modes Effects and Criticality Analysis (FMECA)
- RAM Analysis
- Life Cycle Costing
- Care and Maintenance Plans
- Asset Closure Plans
- Shutdown Management Plans



## Reliability as a Service (RaaS)

We can support your operation to establish your Reliability Engineering capability, or bolster your reliability team to execute critical projects, by embedding qualified and experienced Reliability and Engineering resources within your organisation to achieve specific and tangible objectives.





**ReliaSoft®**

### Exclusive ReliaSoft Distributor in AU/NZ

As the sole reseller in Australia and New Zealand of ReliaSoft Software, HolisticAM can support your Reliability Engineers to transform your asset data into effective decisions by providing a powerful range of reliability software solutions to facilitate a comprehensive set of reliability engineering modelling and analysis techniques.

**APOLLO**  
Root Cause Analysis™  
+  
**RC Pro®**

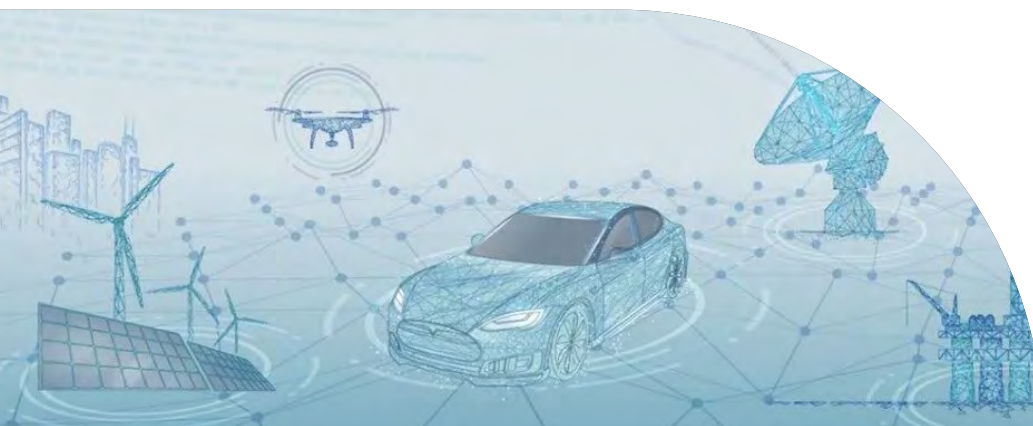
### Root Cause Analysis Independent Facilitation

As Australia's only Certified Apollo RCA Trainers and sole distributors of the RC Pro software, our team of Apollo trainers and facilitators will support your business by developing the capability within your team or independently facilitating a structured, process-driven approach to identify, mitigate or eliminate significant asset or process failures with the objective of preventing the problems from recurring.



### Training Services

We offer both online and in-person training sessions in Asset Management and Reliability Engineering, that can be developed and tailored to meet your specific requirements and needs. This will equip your team with the necessary skills to manage, maintain and optimise your assets and resources effectively.



# Our Approach

## Maintenance Strategy Development and Optimization

Our engineers apply RCM and FMECA methodologies, techniques and tools to develop comprehensive maintenance strategies that are aligned with your current operating model and asset performance objectives.

## Condition Monitoring Strategy Development

We support businesses by developing detailed Condition Monitoring (CM) Plans that include options selection for CM technologies and techniques, comprehensive condition-based maintenance strategies and, detailed work Instructions for data collection, back-end data analysis and reporting.

## Master Data Development and Management

We ensure development of accurate and complete master data for maintenance teams to make well-informed decisions, minimise downtime and improve overall equipment reliability.

## Bill of Materials (BOMs) Development

To ensure the effective execution of maintenance activities by enhancing planning, maintenance, and supply chain efficiencies, our team identifies and develops all Materials Master Data and BOMs in your ERP or CMMS.

## Work Instruction Development

To ensure that the right work is done correctly with enough information, data and detail to ensure that each task is completed in a consistent manner, we develop fit for purpose work instruction documents that are loaded into the Document Management System and integrated with the ERP and CMMS.

## Life Cycle Cost (LCC) Modelling

We evaluate the total cost of owning and operating assets using our ReliaSoft application to develop detailed Reliability Block Diagrams and model the operational equipment and process and determine performance and costing data over the asset lifecycle. This process is not only key for developing alternative strategies to reduce costs but provides crucial data as part of any options analysis when selecting new equipment.

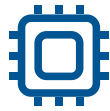
## Root Cause Analysis (RCA)

As an independent Apollo RCA Partner, we facilitate onsite Root Cause Analysis to systematically identify underlying causes of significant failure supported by the development and management of robust solutions that mitigate or eliminate the cause of the failure and prevent recurrence.

**If you experience high risk, cost, complex, or recurrent failures, HolisticAM can help.**

# What Makes Us Stand Out

## ADVANCED TECHNOLOGY



Leveraging our software solutions to provide predictive insights that enhance data driven decision-making and operational efficiency.



## EXPERT TEAM

Our team comprises industry-certified professionals with an average of 20 years of on-site experience in reliability engineering, planning, maintenance execution and asset management.

## PROVEN SUCCESS



Our project track record includes demonstrated improvements in asset performance, reduction in maintenance costs, and successful project implementations, as evidenced by comprehensive case studies and client testimonials.



## CUSTOMISED SOLUTIONS

We develop tailored solutions that meet the unique needs of each client, ensuring quantifiable results and customer satisfaction.

# Projects We Have Done

## CATERPILLAR 994K MAINTENANCE STRATEGY DEVELOPMENT

### Mining industry

Our client had purchased a Caterpillar 994K wheel loader and needed a risk-based maintenance strategy to ensure long-term reliability. HolisticAM was engaged to develop a comprehensive FMECA maintenance strategy, work instructions, and SAP Master Data Requirements during the build phase.



### THE CHALLENGES

- First-time purchase of Caterpillar wheel loader leading to unfamiliarity.
- Historical deficiencies in condition monitoring.
- Need for improved oil sampling techniques and analysis interpretation.

### OUR SOLUTIONS

- Developed a FMECA-based maintenance strategy utilising HsM software.
- Provided in-house training on oil sampling techniques and interpretation of analysis results.
- Delivered a hybrid onsite-offsite execution approach.

## RESULTS

Implemented a clear, risk-based maintenance strategy.

Delivered concise work instructions and Master Data load sheets.

Conducted practical training on oil sampling and analysis interpretation.



## PROJECTS WE HAVE DONE

# KOMATSU 930E MAINTENANCE STRATEGY OPTIMISATION

### Mining industry

The Komatsu 930E Electric Drive Haul Truck was underperforming with numerous major component failures. HolisticAM was engaged to review the fleet's maintenance strategy to understand key drivers of unavailability and implement improvements.



### THE CHALLENGES

- Significant unplanned failures during planned maintenance services.
- Uncertainty in preventive maintenance strategy quality.
- Diverted tactics from original FMECA.

### OUR SOLUTIONS

- Conducted Downtime and Life Data Analysis (LDA) to identify failure characteristics.
- Reviewed maintenance execution and Mean Time to Repair (MTTR).
- Recommended truck upgrades to improve reliability and reduce total cost of ownership.

## RESULTS

Updated FMECA-based maintenance strategy.

Improved service sheets and PM service-day execution.

Increased fleet availability by 112 hours over six months.

Consistent increase in Mean Time Between Failures (MTBF) by >90 hours.

Decreased MTTR through enhanced maintenance efficiency.

## PROJECTS WE HAVE DONE

# CONCENTRATOR OPERATIONAL READINESS

### Client – Nickel Mine

HolisticAM supported the recommissioning of a concentrator after a five-year care & maintenance period. We provided specialist reliability engineering services to ensure operational readiness, asset integrity, and accurate SAP technical object structure.



### THE CHALLENGES

- Inaccurate SAP technical object structure.
- Uncertainty about mechanical asset conditions.
- Gaps in preventative maintenance strategies and spare parts availability.

### OUR SOLUTIONS

- Aligned Functional Location structure with installed assets.
- Assessed operational criticality and material risk.
- Conducted a comprehensive integrity assessment and gap analysis of SAP maintenance items.
- Developed FMEA-based maintenance strategies for belt conveying systems.

## RESULTS

Detailed documentation of required SAP Functional Locations alterations.

SME-reviewed multi-criteria analysis of operational criticality and material risk.

Comprehensive integrity assessment and maintenance strategy recommendations.

Ensured readiness of preventative maintenance strategies and spare parts availability.

# We Are Here to Help

With over three decades of experience in mining and heavy industry, Dave focuses on improving asset reliability, extending equipment life, and reducing operating costs.

He holds a Master's degree in Maintenance & Reliability from Monash University, with vast experience as site Maintenance and Reliability Manager and Head of Reliability for large organisation in the mining sector, and has served as Chair of the Victorian Asset Management Council, as well as lectured in asset reliability at Federation University.

At Holistic Asset Management, he leads a team of talented engineers and reliability experts providing comprehensive asset management solutions to industries in Australia and internationally.

Dave believes in contributing to his industry beyond running a profitable business, understanding that the maturity of asset management systems and processes is key to delivering performance and value.



**Dave Alexander**

Managing Director,  
Holistic Asset Management

## Our Team of Experts

Our Asset Management and Reliability Specialists offer a powerful combination of industry expertise, subject matter mastery and dedication to delivering excellence for our clients, stakeholders and each other.

Our team has combined expertise in almost all areas of reliability engineering, asset management, and maintenance management with hands-on experience in all mining assets.

We are structured to accommodate all requests of any size or complexity, from short telephone consultations to long term engagement of SME resources, to ensure our clients obtain the required value from their assets.



**RECOGNISE,  
BELIEVE AND SEE  
THE REAL VALUE  
OF MANAGING ASSETS.**



**Holistic Asset**  
MANAGEMENT

(07) 5211 0322 | [WWW.HOLISTICAM.COM.AU](http://WWW.HOLISTICAM.COM.AU)